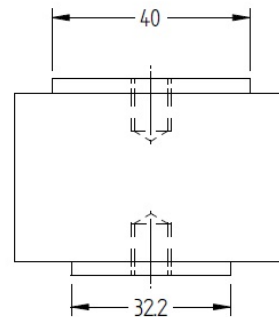
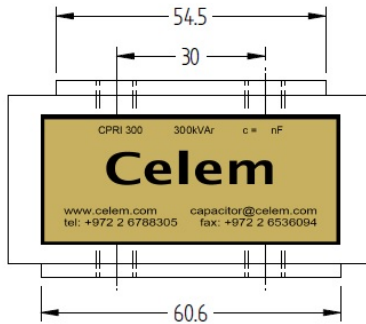
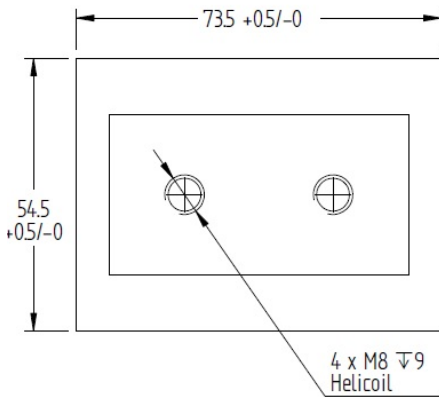


CPRI 300

Conduction-cooled capacitor

Technology Patented Worldwide



The CPRI 300 conduction-cooled capacitor, although still produced, has been superseded by the CPRI 400New. Please see our website for more capacitance values.

Specifications

Type		CPRI 300					
Dimensions (L x W x H)	mm	73.5 x 54.5 x 40					
Weight	kg	0.7					
Capacitance ($\pm 10\%$)	μF	0.1 μF	0.4 μF	0.67 μF	0.8 μF	1 μF	1.25 μF
Sinusoidal Voltage	V_{rms}	500					
Peak Voltage	V	710					
Max. Current	A_{rms}	650					
Max. Power	kVA_T	300					

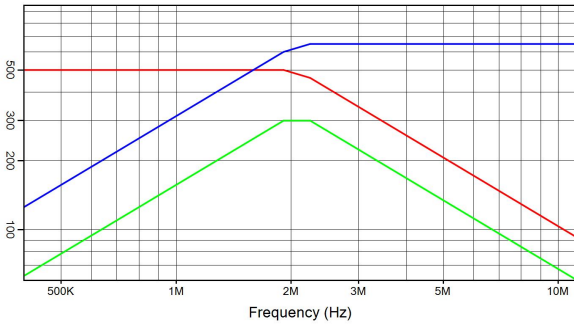
Celem Power Capacitors

Produced: 03-09-2015

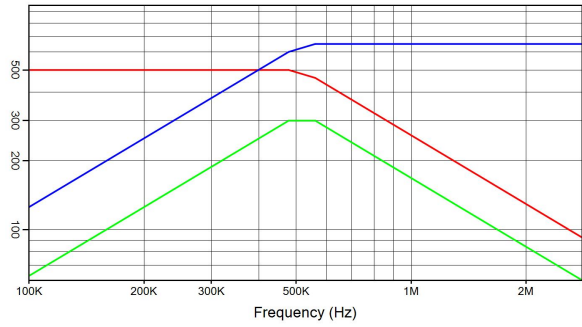
CPRI 300

Conduction-cooled capacitor

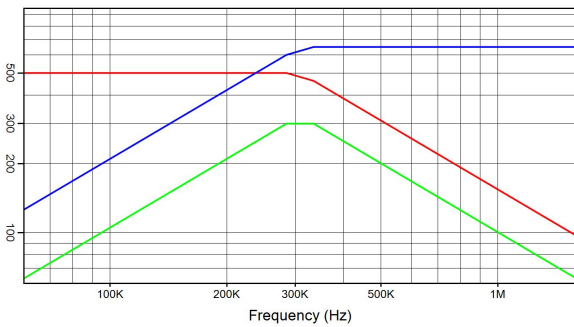
Technology Patented Worldwide



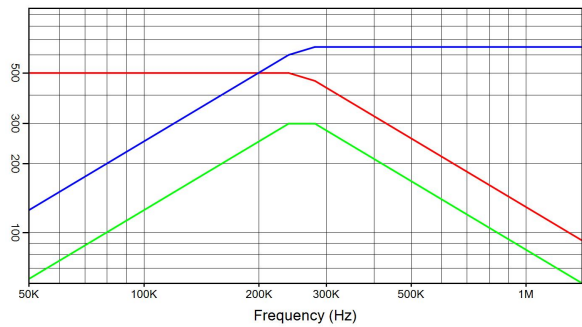
CPRI 300 0.1 μF 500 V_{rms} 650 A_{rms} 300 kVA_r
 I(A) — Q(kVA_r) — V_{rms}



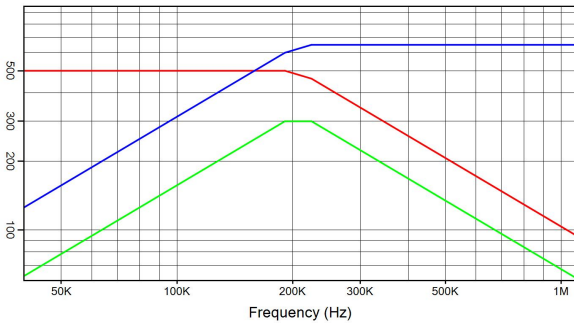
CPRI 300 0.4 μF 500 V_{rms} 650 A_{rms} 300 kVA_r
 I(A) — Q(kVA_r) — V_{rms}



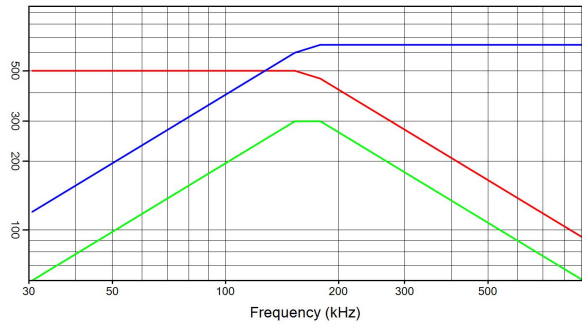
CPRI 300 0.67 μF 500 V_{rms} 650 A_{rms} 300 kVA_r
 I(A) — Q(kVA_r) — V_{rms}



CPRI 300 0.8 μF 500 V_{rms} 650 A_{rms} 300 kVA_r
 I(A) — Q(kVA_r) — V_{rms}



CPRI 300 1 μF 500 V_{rms} 650 A_{rms} 300 kVA_r
 I(A) — Q(kVA_r) — V_{rms}



CPRI 300 1.25 μF 500 V_{rms} 650 A_{rms} 300 kVA_r
 I(A) — Q(kVA_r) — V_{rms}

Celem Power Capacitors

Produced: 03-09-2015